

JP1  
Mr. & Mrs. Charles E. Loops, Jr.  
907 Chowan Ave.  
Lynchburg, Virginia



AVON PARK BOMBING RANGE  
AVON PARK, FLORIDA

Tuesday  
April 13, 1943

Mya Keds,-

Just got your letter a few moments ago - so as long as it's too late to go to town and help the other boys with their "wet front" - might I not join you for awhile? As I said - I would probably have gotten your letter sooner if Paul said he had been carrying it around with him and couldn't remember to give it to me. - Oh, well, - that's much better than not getting any mail at all, isn't it? - a nut - you should know him - a real Brooklyn boy, but not the kind ordinarily associated with the Bronx! He will keep you laughing all night!

I've had rather a busy day for a change. yesterday we got "our" new plane - so today - after packing it and weighing in (like all good fighters) we took us a little cross country run to check up on the gas consumption. It would be rather embarrassing to be short of where we wanted to go and run out of gas. - In pretty certain we'd find no highways - and besides - our wings wouldn't fold up in flight at least! Well, - we took off - went a little north of Raleigh and returned - not bad for 3½ hrs, eh? - would you like to buy one to commute with - you who have sweated out many a full day's drive for one way?

Mella - I think I'll be seeing some of the

same country - that cousin of a friend of yours  
did - or is, - if you know what I mean. - Don't publicize  
the fact, however. I still have hopes of getting my  
own place once we get there - at least - lots of things  
point that way. -

I'm glad you all got the fruit - but how  
can it be lasting that long - I know there  
wasn't that much of it! - I've been meaning to send  
it all the time I was in Florida - but you see  
how good my intentions are don't you? - Oh, well,  
I did eventually get it done!

Ypp. Brothers, - guess you're right about Savannah,  
at least, part so. - I haven't been to town too much,  
but believe you me - after Avon Park - well, - all I  
can say is think twice before you ever call a  
place you've ever been in a "whistle stop" - even  
Statesboro! But then you're wrong about the  
mosquitoes - the real ones are in Florida! - The  
alligators instruct them in methods of attacks -  
and a funny thing - they watch us so closely that  
they no longer attack individually - they use  
variations of formations! - And then after they finally  
get you down and get their fill of ya - they want  
let you sleep cause they keep diving and blowing  
the covers off of ya while you lay there too far  
spent to resist! -

Hey, - what's this about the draft - you tell  
'em to go away and let you alone - you're a married  
man with a family, you have enough battles at  
home! (I'm glad I'm out of reach at this point!) Tell  
em to go chase themselves - and I said it. - I'm going  
to cause enough havoc without any more troops  
needed! - So then.

- Well - I'll say bye for now - and I'll write  
when I can. -

Love Frank

Dr. A. P. O. number to date: !!

*Fight Where Forts Can't*

# Mitchells and Marauders Doolittle's Work Horses

By DONALD COE

United Press Staff Correspondent

AN ADVANCED U. S. AIRBASE, NORTH AFRICA, April 21 —(Delayed)—Two types of two-engined bombers, the stubby-winged Martin Marauders and twin-tailed North American Mitchells are the work horses of Maj. Gen. Jimmy Doolittle's strategic air forces, filling the gap between the big four-motored jobs and the light fighter-bombers.

They drop bombs where the Flying Fortresses cannot work because of cloud formations, or where air force tacticians would not want to use a Fortress formation. Because they operate from a lower altitude and have lighter protection, they naturally take more of a beating.

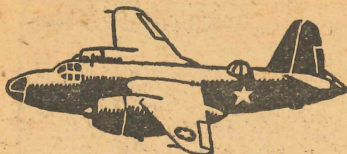
But their losses are surprisingly low, and their crews are their most enthusiastic backers. Men at their bases offer ample refutation of any idea that they are suicide ships.

## USEFUL AGAINST BOATS

Because of the relative speed with which they can get in the air and to their targets, they are particularly useful against moving objectives such as naval craft and convoys.

With an hour of the time a ship or convoy is located they can be in air formation and on their way. They can work from shorter runways than the heavies, hence can be located nearer the front.

Enemy interference can disturb their accuracy more easily than it can ruffle the bomb-aim of the heavy bombers, but against lightly defended targets they furnish as fine an argument for precision bombing as the Forts.



MARTIN B-26A  
"MARAUDER"

A good example of their accuracy was furnished at Porto Torres, Sardinia, where Mitchells raided a port and airfield April 18. They hit small and middle-sized ships squarely and dropped all but one stick of bombs either on the docks or jetties or on ships. At the airport fragmentation bombs struck among all the parked aircraft and heavier bombs started fires and demolished hangars.

## HAVE FIGHTER ESCORTS

The Mitchells fly to the target on a level. Nearing it, they gain altitude quickly, and after loosing their loads they gain speed for evasive action by diving steadily to the deck and straightening out.

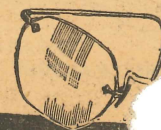
The Marauders, with shorter wings and a slower rate of climb, are well-armed, and can make an entire bombing trip at about bombing altitude, decreasing their chances of damage from anti-aircraft fire.

Unlike the Fortresses which sometimes go along, Mitchells and Marauders always are escorted, usually by fighters.

## Moroccoan Hair-Do



The cost of a haircut doesn't figure in the budget of this member of the Sultan of Morocco's guard. Pictured at Rabat, he sports mushroom style turban and pajama type "frogs" on his jacket.



## EYES EXAMIN

- PROFESSIONAL OPTICAL S
- MODERN EQUIPMENT
- MODERN
- CO



# Doolittle's Work Horses

By DONALD COE  
United Press Staff Correspondent

AN ADVANCED U. S. AIRBASE, NORTH AFRICA, April 21 —(Delayed)—Two types of two-engined bombers, the stubby-winged Martin Marauders and twin-tailed North American Mitchells are the work horses of Maj. Gen. Jimmy Doolittle's strategic air forces, filling the gap between the big four-motored jobs and the light fighter-bombers.

They drop bombs where the Flying Fortresses cannot work because of cloud formations, or where air force tacticians would not want to use a Fortress formation. Because they operate from a lower altitude and have lighter protection, they naturally take more of a beating.

But their losses are surprisingly low, and their crews are their most enthusiastic backers. Men at their bases offer ample refutation of any idea that they are suicide ships.

## USEFUL AGAINST BOATS

Because of the relative speed with which they can get in the air and to their targets, they are particularly useful against moving objectives such as naval craft and convoys.

With an hour of the time a ship or convoy is located they can be in air formation and on their way. They can work from shorter runways than the heavies, hence can be located nearer the front.

Enemy interference can disturb their accuracy more easily than it can ruffle the bomb-aim of the heavy bombers, but against lightly defended targets they furnish as fine an argument for precision bombing as the Forts.



MARTIN B-26A  
"MARAUDER"

A good example of their accuracy was furnished at Porto Torres, Sardinia, where Mitchells raided a port and airfield April 18. They hit small and middle-sized ships squarely and dropped all but one stick of bombs either on the docks or jetties or on ships. At the airport fragmentation bombs struck among all the parked aircraft and heavier bombs started fires and demolished hangars.

## HAVE FIGHTER ESCORTS

The Mitchells fly to the target on a level. Nearing it, they gain altitude quickly, and after loosing their loads they gain speed for evasive action by diving steadily to the deck and straightening out.

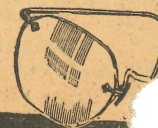
The Marauders, with shorter wings and a slower rate of climb, are well-armored, and can make an entire bombing trip at about bombing altitude, decreasing their chances of damage from anti-aircraft fire.

Unlike the Fortresses which sometimes go along, Mitchells and Marauders always are escorted, usually by fighters.

## Moroccan Hair-Do



The cost of a haircut doesn't figure in the budget of this member of the Sultan of Morocco's guard. Pictured at Rabat, he sports mushroom style turban and pajama type "frogs" on his jacket.



## EYES EXAMIN

- PROFESSIONAL OPTICAL S
- MODERN EQUIPME

• MOD

• CO

Dr.



...used a murderous mortar, by the Germans in another sector in machine-gun and rifle barrage which a futile attempt to widen their Ku-

# Fight Where Forts Can't

## Mitchells and Marauders

### Doolittle's Work Horses

By DONALD COE  
United Press Staff Correspondent

AN ADVANCED U. S. AIRBASE, NORTH AFRICA, April 21 —(Delayed)—Two types of two-engined bombers, the stubby-winged Martin Marauders and twin-tailed North American Mitchells are the work horses of Maj. Gen. Jimmy Doolittle's strategic air forces, filling the gap between the big four-motored jobs and the light fighter-bombers.

They drop bombs where the Flying Fortresses cannot work because of cloud formations, or where air force tacticians would not want to use a Fortress formation. Because they operate from a lower altitude and have lighter protection, they naturally take more of a beating.

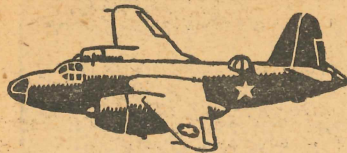
But their losses are surprisingly low, and their crews are their most enthusiastic backers. Men at their bases offer ample refutation of any idea that they are suicide ships.

#### USEFUL AGAINST BOATS

Because of the relative speed with which they can get in the air and to their targets, they are particularly useful against moving objectives such as naval craft and convoys.

With an hour of the time a ship or convoy is located they can be in air formation and on their way. They can work from shorter runways than the heavies, hence can be located nearer the front.

Enemy interference can disturb their accuracy more easily than it can ruffle the bomb-aim of the heavy bombers, but against lightly defended targets they furnish as fine an argument for precision bombing as the Forts.



MARTIN B-26A  
"MARAUDEUR"

A good example of their accuracy was furnished at Porto Torres, Sardinia, where Mitchells raided a port and airfield April 18. They hit small and middle-sized ships squarely and dropped all but one stick of bombs either on the docks or jetties or on ships. At the airport fragmentation bombs struck among all the parked aircraft and heavier bombs started fires and demolished hangars.

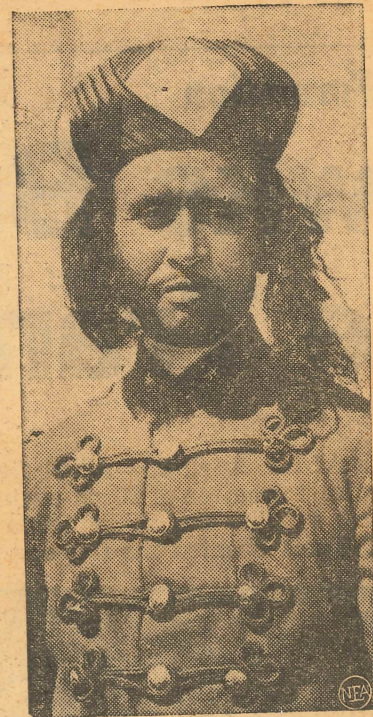
#### HAVE FIGHTER ESCORTS

The Mitchells fly to the target on a level. Nearing it, they gain altitude quickly, and after loosing their loads they gain speed for evasive action by diving steadily to the deck and straightening out.

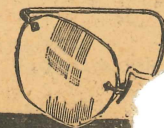
The Marauders, with shorter wings and a slower rate of climb, are well-armed, and can make an entire bombing trip at about bombing altitude, decreasing their chances of damage from anti-aircraft fire.

Unlike the Fortresses which sometimes go along, Mitchells and Marauders

## Moroccan Hair-Do



The cost of a haircut doesn't figure in the budget of this member of the Sultan of Morocco's guard. Pictured at Rabat, he sports mushroom style turban and pajama type "frogs" on his jacket.



## EYES EXAMIN

- PROFESSIONAL OPTICAL S
- MODERN EQUIPMENT



—News-Action  
 soon grow over the battlefields, but "... one little town I knew so  
 look at," writes Ernie Pyle. "This village has died. ... There will  
 u Zid." No pictures of ruined Sidi bou Zid have yet been received,  
 in Libya parallel Pyle's word picture in the accompanying dispatch,  
 the Tunisian front.

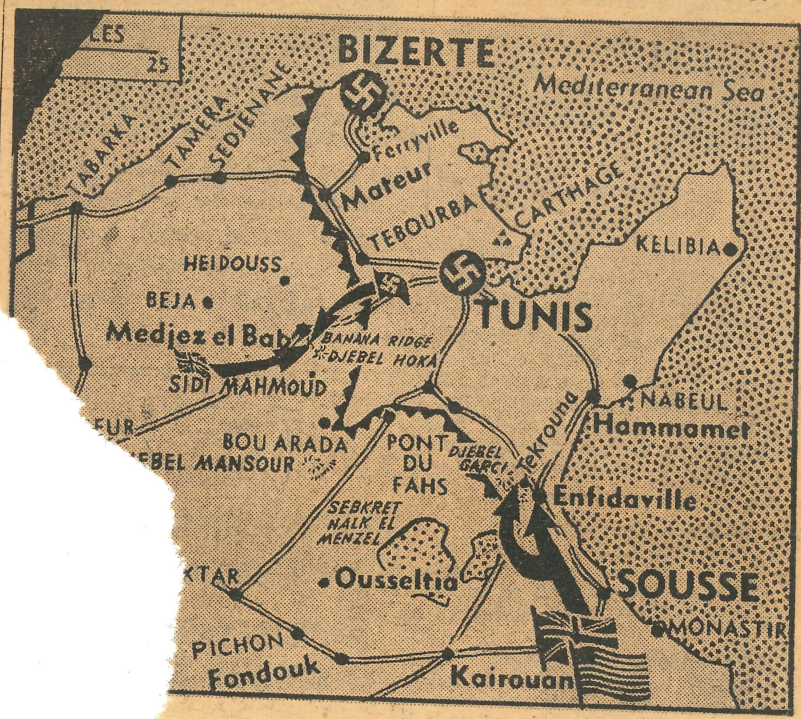
entire Formation

# 

ERS, North Africa, April 23—Allied fighter planes have shot down 38  
 ling an entire formation of 20 six-engine transports en route to Tunisia,  
 billing enemy supplies and soldiers into the Mediterranean.  
 he Gulf of Tunis boosted the five-day toll of enemy planes to 203.

rted a  
 ank by  
 nine-  
 south  
 ing all  
 of hills

miles  
 es south  
 Army  
 by  
 es



## 

Calif., April 23  
 with automatic  
 bank of  
 two con-  
 m Prison  
 inside a

Officials said the prisoners, employed  
 in the prison plumbing shop, had es-  
 caped by a ladder constructed of scraps  
 of pipe inside their cell block ventilator  
 shaft.

The convicts sawed thru the shaft at  
 a point 10 feet above the ground, and  
 ran across the brightly lighted prison  
 yard, ignoring the armed guards in  
 the prison tower.

convicts,  
 "roof"