

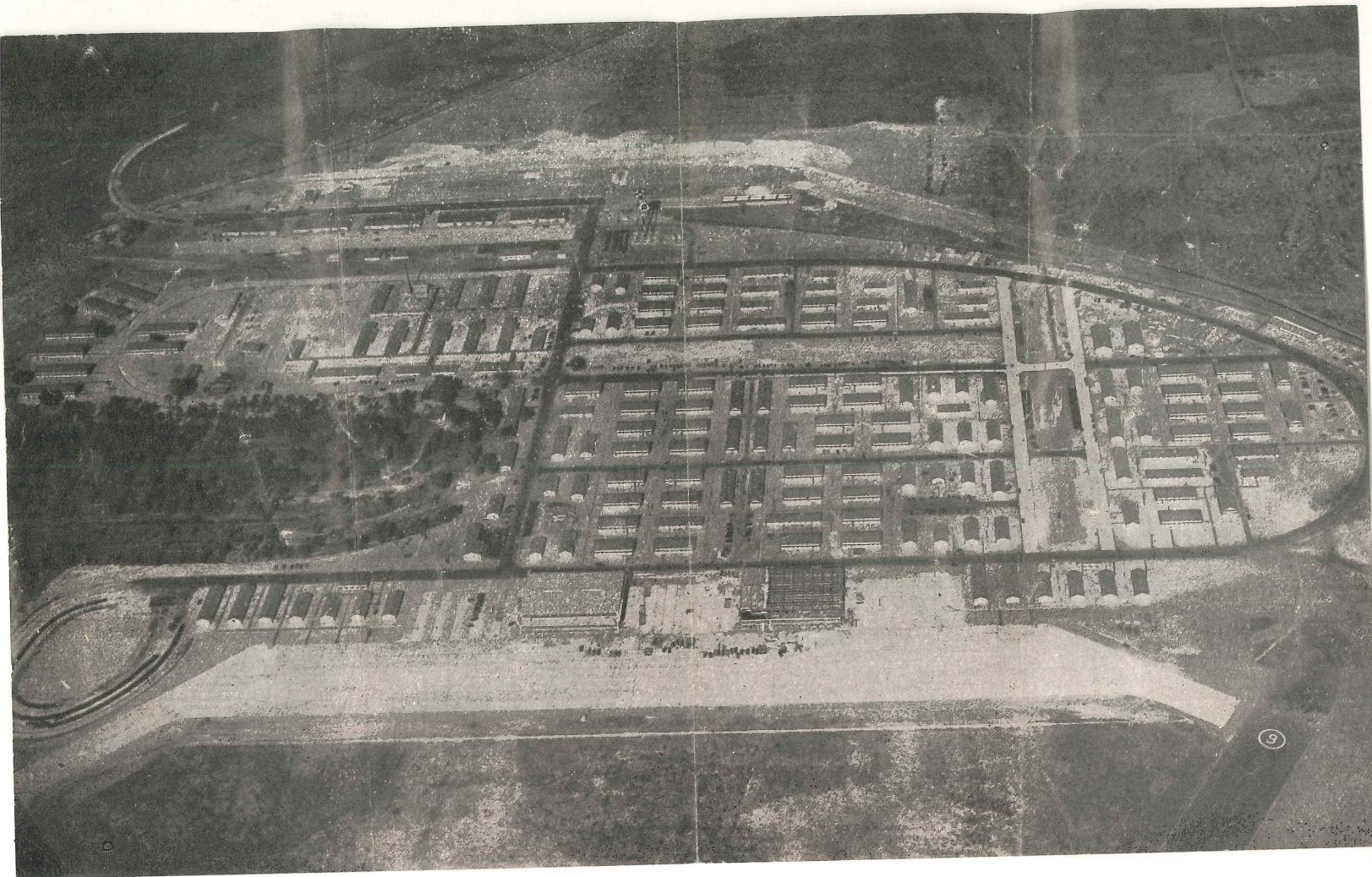
Lt. F. W. Loops

Flight Test Section

HUNTER FIELD, - GEORGIA



Mr. & Mrs. Charles E. Loops
5418-13th St., N. W.
Washington, D. C.



A well, with a 100,000-gallon water tank; a sewage disposal plant, paved streets and sidewalks; railroad spur, concrete parking apron 200 by 2,000 feet, and other items also were built in the first three months.

Cost of the original project has been estimated at about \$3,000,000. New units now under construction will amount to \$500,000.

Major Michael Grimaldi was constructing quartermaster in charge of the original project. On February 1 additional work was transferred to the U. S. Engineer Corps under Colonel F. W. Altstaetter, district engineer.

Goode Construction Corporation of Charlotte, N. C., is general contractor for both projects, with Burge & Stevens, of Atlanta, as architect-engineer, and Espy Paving & Construction Company, of Savannah, sub-contractor.

The Air Base started operations last October 1, utilizing existing facilities of the airport. A temporary tent camp was set up for use during construction.

About 3,500 officers and men are stationed at the base, making up the 35th Air Base Group, the 27th Bombardment Group (Light), the 3rd Bombardment Group (Light) and the 17th Bombardment (Light) Wing Headquarters.

*This was gotten out by the
C. Commerce One when Hunter was being built.*

SAVANNAH AIR BASE

The Savannah Air Base, under the command of Brigadier General Lewis H. Brereton, is a complete community located on the north end of Savannah's Municipal Airport, which has been leased to the Army Air Corps.

First project of its type contracted for under the new defense program in the United States, the Air Base was ready for occupancy last January 1, less than 90 days after ground was broken.

Additional units are now being built to increase the capacity, and existing runways are being improved and increased in size.

To meet a 90-day schedule, early work was continued after dark under floodlights; but despite the haste, construction is sound and includes such comforts as forced hot air heating systems with filters, modern plumbing in each building, and screens throughout.

The original project included 182 buildings—55 barracks for 3,500 men, 18 mess halls, 20 warehouses, 2 massive hangers, 14 administration buildings, 150-bed hospital, fire headquarters, post exchange, officers' quarters, and various other buildings.

CHER TUESDAY

ES PARTY

to Head At- tfit

Schumacher, command-
Savannah A. S. F.
Tuesday night to
assignment as com-
Santa A. S. F. Depot.
Schumacher's successor has
announced.

the depot last July,
Schumacher has been active
and organizing pro-
have resulted in a con-
savings of man-hours and
that installation. The su-
management program, in-
and carried out under his
brought about a savings of
man-hours a year together
monetary savings of \$55,000.
tiveness of operation, the Sa-
Depot ranked fifth out of
twenty-two Quartermaster and
Depots in the country dur-
Colonel Schumacher's assignment
It stood third among the
quartermaster depots.

at the depot Colonel Schu-
r set up a streamline process
trailer service unit of the
enance division whereby the
trailers used for transporting
from one section to another,
be assured of top efficiency at
es.

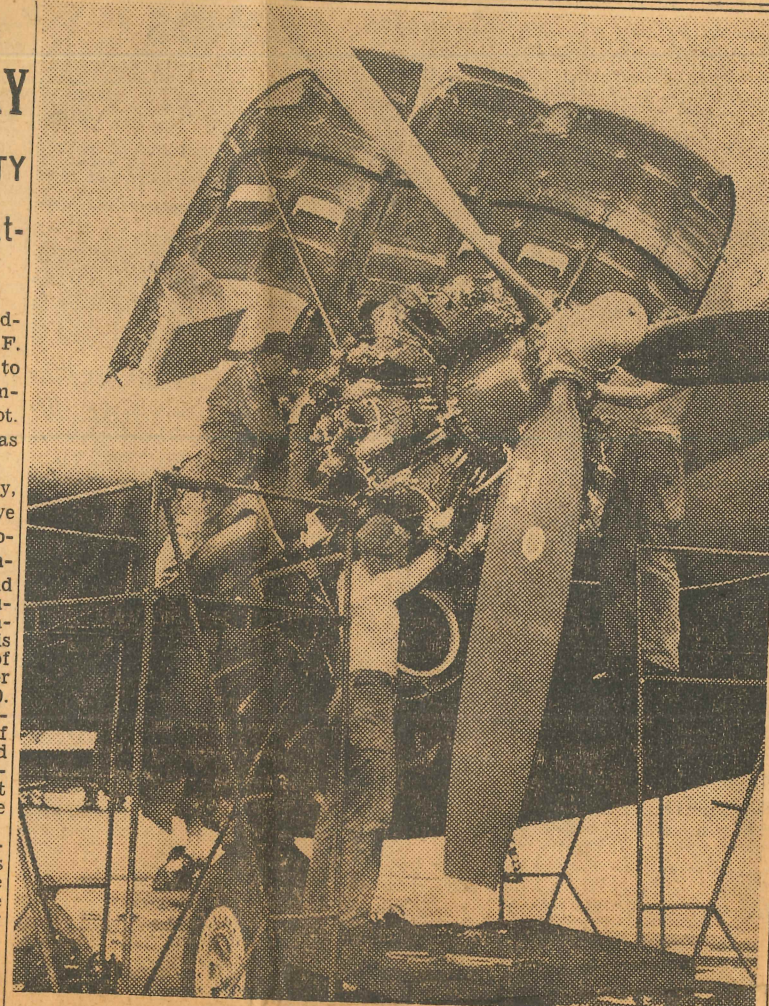
war bond program was stepped
16.20 per cent deduction in
the highest ever reached at
pot. Colonel Schumacher also
ed the largest award ever
by the suggestion committee to
loye. The depot achieved its
ety record reporting "no ac-
for three successive months.
well party was given for
and Mrs. Schumacher and
nter, Mary Jane, on Tues-
g by the depot officers at
club. Mrs. Schumacher
Jane Schumacher will ac-
Colonel Schumacher to At-

umacher was the quar-
pply officer for the At-
before he came to Savan-
has been on active duty
ay for thirty-seven years,
posts throughout this
in Puerto Rico.

nam's Quake ces Dishes, s Windows

Instrument Re- remor Felt ut Southeast

hit yesterday
k without
e, but
and



—Official AAF photo

KEEP 'EM FLYING—Hunter Field maintenance men, including mechanics, engineers, armorers, radio men, and inspection crews, worked around-the-clock to speed light and medium bombers and other aircraft to the war in Europe. Hunter Field claims all records for efficiency and volume of staging activities in the country. At peak periods, planes left Hunter Field every hour and fifteen minutes, twenty-four hours a day.

Hunter Field Sets Record for Staging

More Than 7,000 Planes With Full Crews Ready for Combat Went Through Great Airfield—All Aviation Praises Feat

More than seven thousand planes, including light and medium bombers, and more than sixty thousand air-crew members were staged from Hunter Field during the critical war years, 1943-1945, to take their places with the Army Air Forces operating in the European and Mediterranean theaters of operations, according to figures released yesterday by Col. Ralph G. Lockwood, commanding officer of Hunter Field.

NUGENT TO TAKE OATH TUESDAY

New Aldermen to Be Elected

During the year of invasion, 1944, more than 4,000 aircraft and 35,000 men passed through Hunter Field's processing lines in preparation for their flights across the Atlantic to join with the Eighth, Ninth, Twelfth, and Fifteenth Air Forces in Europe. The number included more than 1-
co

ALEXA NEW CO

HECKLES

Junior Cha Exp

A. Leopold Al
member of the
spoke on the pro
stitution at the
ior Chamber of
at the Hotel D
considerable port
deavoring to ans
the proposed new
in the editorial colu
ing News.

Mr. Alexander's re
follow:

"There has been a
editorial criticism of
new Constitution in th
ing newspaper in the
so, and as I think it
create confusion in the
on the subject, I want
briefly here.

"The newspaper critic
summed up briefly as fo
the Constitution was prep
General Assembly and no
stitutional convention. Se
impossible for the voters t
arately on each change fr
Constitution. Third, it inc
expenses of the state very

"It is true that the pre
stitution provides that a ne
ie prepared by a convention
where is it stated that this
the only method of doing s
sted authority on constitut
stated in an interview in
ing paper a few days ago th
opinion the whole thing wa
stitutional for this reason.
this opinion is not share
outstanding lawyers and ju
served on the committee w
pared it, such men as the la
Warren Grice of the Supre
Judge David S. Atkinson o
Superior Court, Charles
president of the State Ba
ation, and others. I leav
choose between these op
own feeling is that it r
whether the new Consti
prepared by the Legislati
vention, Governor Arnal
or even the editor of t
News. If it is a good Co
should be adopted, if bad
rejected. Criticism of i
the personnel of the bod
pared it, to my mind,
regards its merits.

"Of course it is impos
voters to vote on each
fifty changes separately
equally true when the C
1877 was voted on and
parts of a Constitution
grated that if some were
others rejected, wild conf
exist, and the Legislature
be faced with the task
reconcile the entire n
would probably have to
rewrite it. Any thinking
immediately see that this
"Now, as for the incre
which are so viciously
the Morning News edi

Continued on Page 5.

Former Res

BONDS

NEW YORK, July 26 (AP).—Large areas of the bond market ended behind minus signs of major fractions to around 2 points today, reflecting surprise in financial quarters generally over the British election results.

Following is a selected list of today's high, low and closing prices of bonds on the New York Stock Exchange and sales of principal bonds:

United States government bonds (dollars and thirty-seconds):

Government Bonds				
Sales in \$1,000 High Low Close				
Treas 2 1/2s 53-49	1106 25	106 25	106 25	106 25
do 2 1/2s 53-51	1107 8	107 8	107 8	107 8
do 2 1/2s 55-54	1108 18	108 18	108 18	108 18
do 2 1/2s 69-64 Dec	1101 21	101 21	101 21	101 21
do 2 1/2s 70-65	1101 11	101 11	101 11	101 11

Corporation Bonds				
Sales in \$1,000 High Low Close				

Am & F E 5s 2030	28 102 3/4	102 3/4	102 3/4	102 3/4
Am T & T 3 1/2s 60	5 105 3/4	105 3/4	105 3/4	105 3/4
do 3 1/2s 61	5 32 105 1/2	105 1/2	105 1/2	105 1/2
do 3s 56	32 138 1/2	138 1/2	138 1/2	138 1/2
Am Tobacco 3s 62	6 103 1/4	103 1/4	103 1/4	103 1/4
do 3s 69	18 103 1/2	103 1/2	103 1/2	103 1/2
Am W W E 6s 75	5 113 3/4	113 3/4	113 3/4	113 3/4
Arm & Co 4 1/2s 75	3 106 3/4	106 3/4	106 3/4	106 3/4
do 3 1/2s 64	3 105 3/4	105 3/4	105 3/4	105 3/4
A. T. S F 4s 95	2 107 1/2	107 1/2	107 1/2	107 1/2
A C L 1st 4s 52	4 107 1/2	107 1/2	107 1/2	107 1/2
do 4 1/2s 66	7 108 3/4	108 3/4	108 3/4	108 3/4

B & O 1st m 48	8 104 1/2	103 3/4	103 3/4	103 3/4
do 95 A	90 81 3/4	78 3/4	79	79
do 95 C	11 89	88	88	88
do 2000 D	19 81 1/4	81 1/4	81 1/4	81 1/4
do 96 F	129 67	64 3/4	64 3/4	64 3/4
do cv 48	13 106	105 1/2	106	106
do 4s 48	13 106	105 1/2	106	106
do 4s 48	3 99	99	99	99
do PLE&W V 4s 51	39 97 3/4	96 3/4	96 3/4	96 3/4
do SW 4	2 100 3/4	100 3/4	100 3/4	100 3/4
do TC 4s 50	1 130 3/4	130 3/4	130 3/4	130 3/4
Bell Pa 5s 60 C	1 106	106	106	106
Brk U G 4s 69	15 82 1/4	81 3/4	81 3/4	81 3/4

Buf R & C 57 st	5 103 3/4	103 3/4	103 3/4	103 3/4
Can Pac 4 1/2s 60	8 104 3/4	104 3/4	104 3/4	104 3/4
do 4s perp	15 23 3/4	23 3/4	23 3/4	23 3/4
Cen of Ga 5s 59 Ct	29 79	78	78	78
do cn 5s 45 1/2	7 104 1/4	104	104	104
Cen Pac 5s 60	31 44 1/2	43	43	43
C R R N J 5s 87 1/2	3 73	73	73	73
B & Q 4 1/2s 77	12 22 1/2	21 1/2	21 1/2	21 1/2
do 4s 58	46 103 3/4	103	103 3/4	103 3/4
Ch I & S 5s 66 1/2	35 22	22	22	22
C. M. St. P. 5s 75 1/2	107 79 1/4	76 3/4	76 3/4	76 3/4
do 5s 2000	327 28	26	26	26
C. M. St. P. 4 1/2s 89 Ct	5 97	96 3/4	96 3/4	96 3/4
do 4s 89 1/2	10 96 1/2	96 1/2	96 1/2	96 1/2
C & N W 4 1/2s 99	38 92 1/4	90	90	90
C R & A 4 1/2s 52 1/2	11 75	73	73	73
do 4s 60 1/2	12 22 1/2	21 1/2	21 1/2	21 1/2
do 4s 68 1/2	46 103 3/4	103	103 3/4	103 3/4
do r 4s 34 1/2	349 68 1/2	66	66 3/4	66 3/4
Ch U S 2 1/2s 63	5 103 1/4	103 1/4	103 1/4	103 1/4
Childs 5s 57 1/2	5 97 1/2	97 1/2	97 1/2	97 1/2
CI U T 5s 73	1 106 3/4	106 3/4	106 3/4	106 3/4
do 4 1/2s 77	3 107	106 3/4	106 3/4	106 3/4
Col S 4 1/2s 80	1 77 1/2	77 1/2	77 1/2	77 1/2
do 5s 61	6 104 1/4	104 1/4	104 1/4	104 1/4
Com Ed 3 1/2s 58	16 105	104 1/2	104 1/2	104 1/2
do 3s 77	19 123 1/4	122 3/4	122 3/4	122 3/4
Con Ed 3 1/2s 48	10 107 1/4	107 1/4	107 1/4	107 1/4
do 3 1/2s 48	5 102 3/4	102 3/4	102 3/4	102 3/4

D & R G 4s 36 1/2	31 66 1/2	66	66	66
do 4s 36 1/2	1 17	17	17	17
D & R G W 5s 55 1/2	39 14 1/4	14	14	14
do 5s 78 1/2	11 63 3/4	63 3/4	63 3/4	63 3/4
Det Ed 3s 70	7 107 1/4	107 1/4	107 1/4	107 1/4
Duq Lt 3 1/2s 65	2 106 3/4	106 3/4	106 3/4	106 3/4

Erie 4 1/2s 2015	35 101 1/2	101 1/2	101 1/2	101 1/2
Gen R & E 4s 69 1/2	10 67 1/2	67 1/2	67 1/2	67 1/2
G & A 5s 45 1/2	1 50	50	50	50
Gt Nor 3 1/2s 67	1 105 1/2	105 1/2	105 1/2	105 1/2
G. M. & O inc 2015	6 100 3/4	100 3/4	100 3/4	100 3/4

Hud C 5s 62 A	68 84 1/4	83 1/4	83 1/4	83 1/4
Hud & Man r 5s 57	72 74 1/2	73 1/2	73 1/2	73 1/2
do inc 5s 57 1/2	68 40	38	38	38
Ill Bell 3 1/2s 81	1 104 1/4	104 1/4	104 1/4	104 1/4
Ill Cen 4s 53	10 95 3/4	95 3/4	95 3/4	95 3/4
do r 4s 55	1 101 1/2	101 1/2	101 1/2	101 1/2
do 4s 66	14 88 3/4	88	88 1/2	88 1/2
I C C S L 5s 63 A	52 95 3/4	94 1/4	94 1/4	94 1/4
Int Gt N 5s 52 1/2	25 92 1/4	91 1/4	91 1/4	91 1/4
Int H E 6s 48 1/2	23 85	85	85	85
Int Pap 5s 47	2 85 1/2	85 1/2	85 1/2	85 1/2
Int T 4 1/2s 52	17 100 3/4	100 3/4	100 3/4	100 3/4
do 5s 55	16 105	104 3/4	104 3/4	104 3/4

Col S 4s 80	11	77½	77	77
Col G 5s 62 May	6	104¼	104¼	104¼
do 5s 61	16	105	104¼	105
Com Ed 3½s 58	19	123½	122¾	122¾
do 3s 77	10	107¼	107¼	107¼
Con Ed 3½s 48	5	102⅞	102¼	102¼
D				
D & F G 4s 26½	21	66¼	66	66

do do 41/25 2047 D
do do 45 97
do 35 2047
O & L CH 45 47
O W R R N 35

[illegible]